

TREE DISPOSITION LIST

LOCATION: 2335 EAST ATLANTIC BLVD., POMPANO BEACH, FL 33062

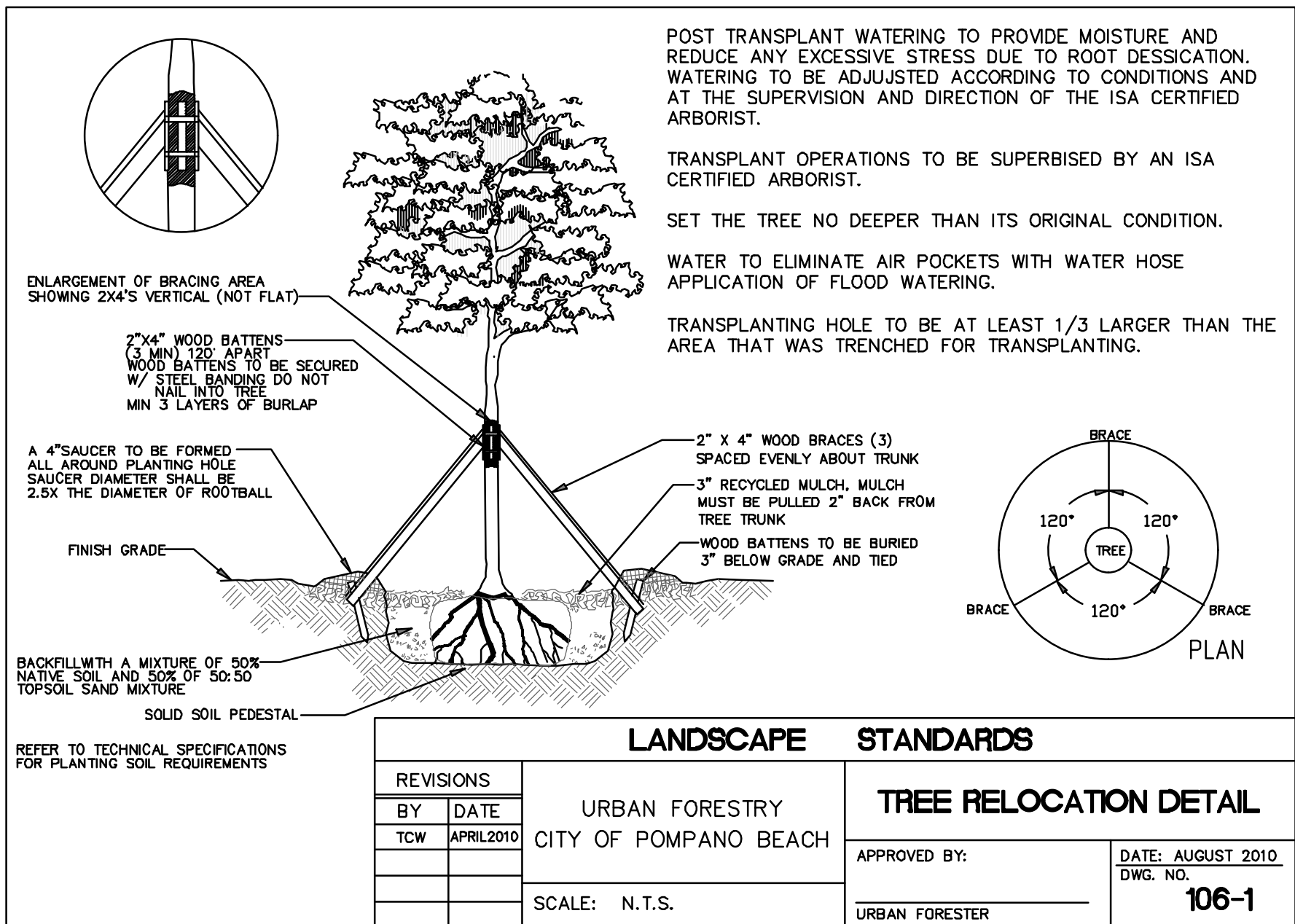
2509E

200002 /2026	BOTANICAL NAME	COMMON NAME	CONDITION (%)	TREE SIZE (INCHES)	HEIGHT (FT)	SPREAD (FT)	DISPOSITION
2	CAESALPINIA GRANADILLO	BRIDAL VEIL TREE	55%	6	12	15	REMAIN
2	CAESALPINIA GRANADILLO	BRIDAL VEIL TREE	55%	6	12	15	REMAIN
3	PHOENIX DACTYLIFERA	DATE PALM	60%	15	-	30	REMAIN
4	PHOENIX DACTYLIFERA	MEDJOL DATE PALM	65%	15	-	30	REMAIN
5	PHOENIX DACTYLIFERA	MEDJOL DATE PALM	65%	15	-	30	REMAIN
6	QUERCUS VIRGINIANA	LIVE OAK	65%	3	18	10	REMAIN
7	QUERCUS VIRGINIANA	LIVE OAK	65%	3	18	10	REMAIN
8	QUERCUS VIRGINIANA	LIVE OAK	65%	3	18	10	REMAIN
9	QUERCUS VIRGINIANA	LIVE OAK	65%	7	24	12	REMAIN
10	QUERCUS VIRGINIANA	LIVE OAK	65%	3	18	10	REMAIN
11	QUERCUS VIRGINIANA	LIVE OAK	65%	7	24	12	RELOCATION
12	QUERCUS VIRGINIANA	LIVE OAK	65%	3	18	10	RELOCATION
13	QUERCUS VIRGINIANA	LIVE OAK	65%	3	18	10	REMAIN
14	QUERCUS VIRGINIANA	LIVE OAK	65%	3	18	10	REMAIN
15	TABEUBIA CARAIBA	YELLOW TRUMPET TREE	65%	2.5	12	7	REMAIN
16	CASSIA JAVANICA	APPLE BLOSSOM CASSIA	65%	2.5	12	7	REMAIN

NOTE: Trees over 18" DBH are calculated by appraised tree value. Trees less than 18" DBH are replaced by DBH.

MITIGATION SUMMARY

0 TREES ARE BEING REMOVED FROM THE SITE
2 TREES ARE BEING RELOCATED TO THE SITE



TREE RELOCATION PROCEDURAL SPECIFICATION

Tree, Palm, Shrub and other Plant Transplanting/Relocating Detail – Recommended Notes:

The American National Standard for Tree Care Operations – Tree, Shrub, and Other Woody Plant Maintenance – Standard Practices (Transplanting) ANSI A300(Part 6)–2005 must be adhered to in its entirety for all relocating/transplanting of trees and shrubs. ANSI A300 (Part 6)–2005 includes the following:

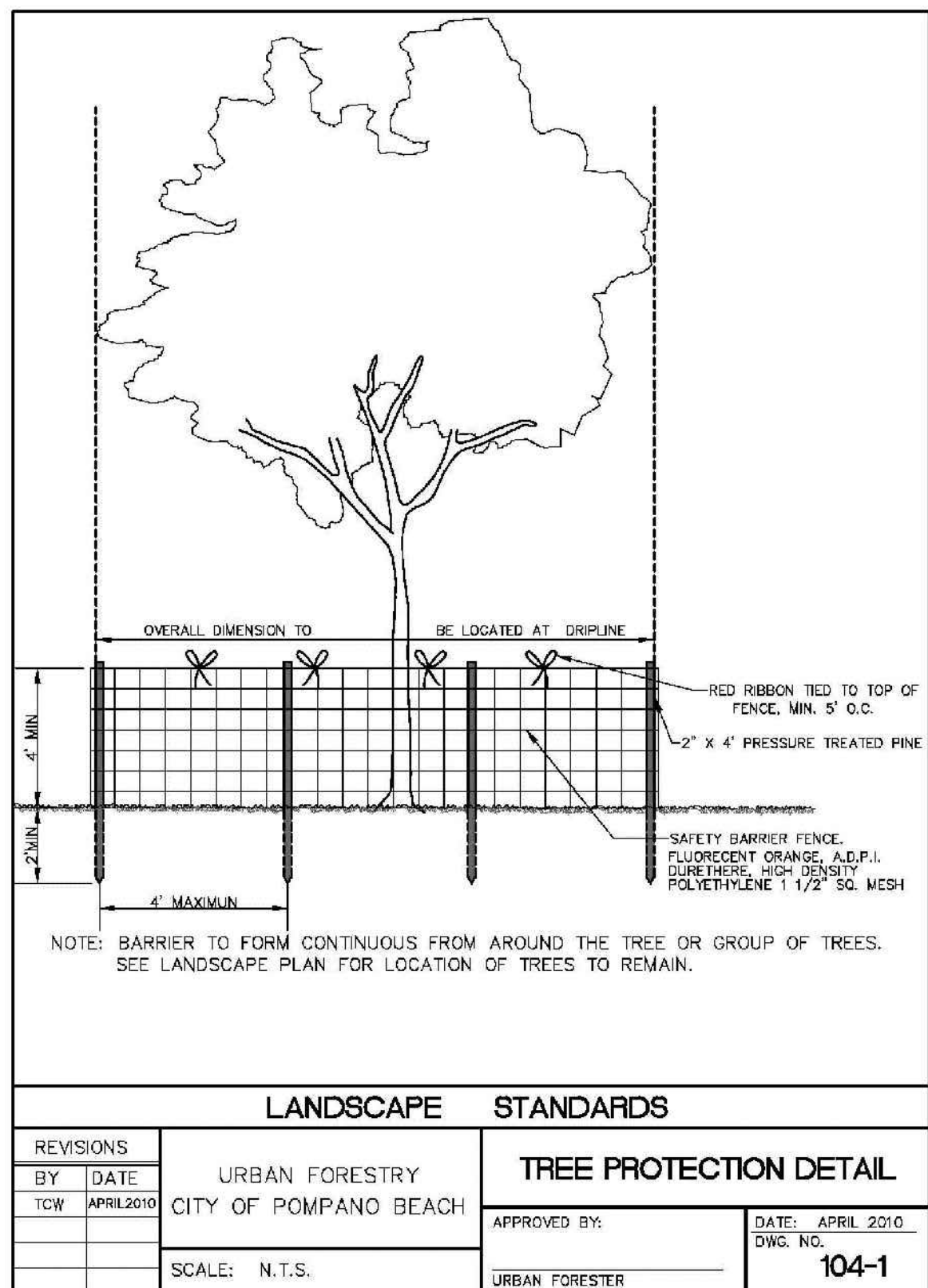
- 60– Transplanting Standards
- 61 – Normative References
- 62 – Definitions
- 63 – Transplanting Practices

The transplanting objectives shall be established prior to beginning the operation. These objectives may be presented in a report format for permitting purposes.






A feasibility and suitability assessment shall be conducted prior to recommending transplanting. Specifications for transplanting should be based on the assessment. See the Checklist in Annex A of ANSI A300 (Part6)–2005. This assessment may be presented in a report format for permitting purposes.

NOTE:

1. ALL EXISTING TREES TO REMAIN ARE TO BE PROTECTED AND PRESERVED. ENCROACHMENT INTO THE CRITICAL ROOTZONE AND WITHIN THE TREE PROTECTION ZONE OF EXISTING TREES TO REMAIN MAY BE CONSIDERED TREE ABUSE PER 155.5203.G AND CAN RESULT IN FINES, PENALTIES, AND CORRECTIVE MEASURES.



TREE LEGEND

- | | |
|---|---------------------|
|  | EX. TREE REMOVE |
|  | EX. TREE REMAIN |
|  | EX. PALM REMOVE |
|  | EX. PALM REMAIN |
|  | EX. TREE RELOCATION |

